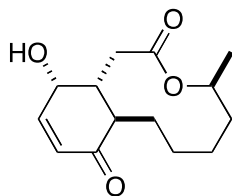


(+)-Sch 642305 (TKGP-121117)

K. Ishigami, H. Watanabe<sup>1)</sup>

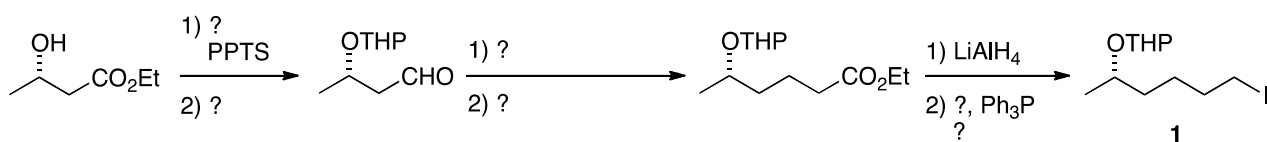


Activity

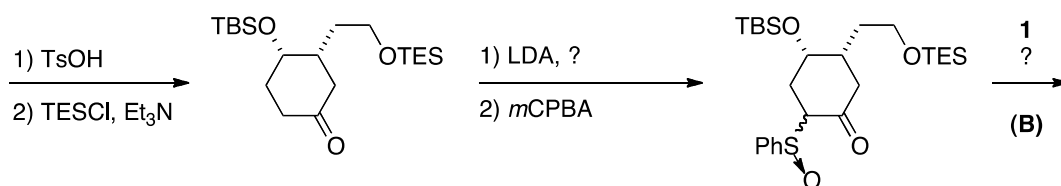
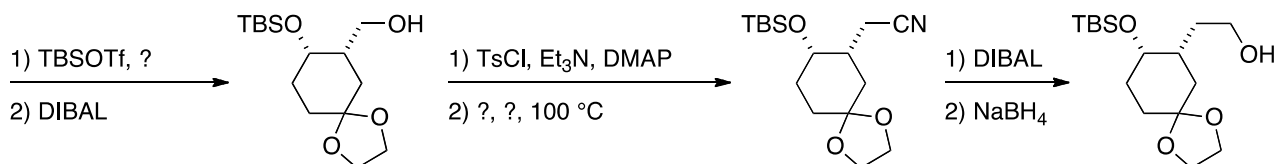
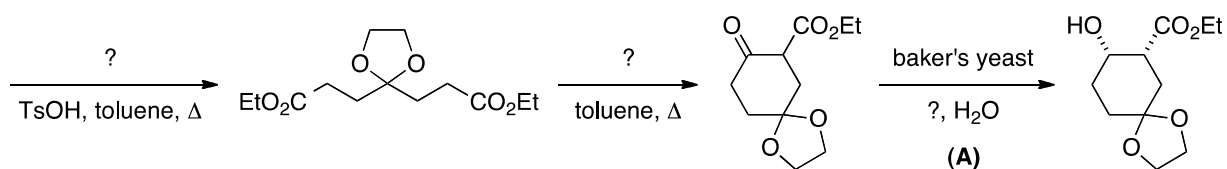
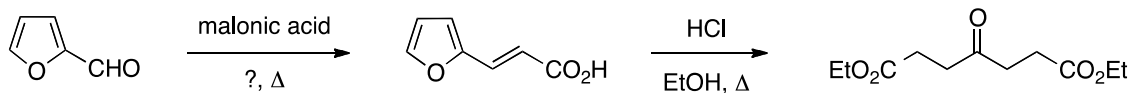
Bacterial DNA primase Inhibitor (バクテリアの DNA プライマーゼ阻害剤)

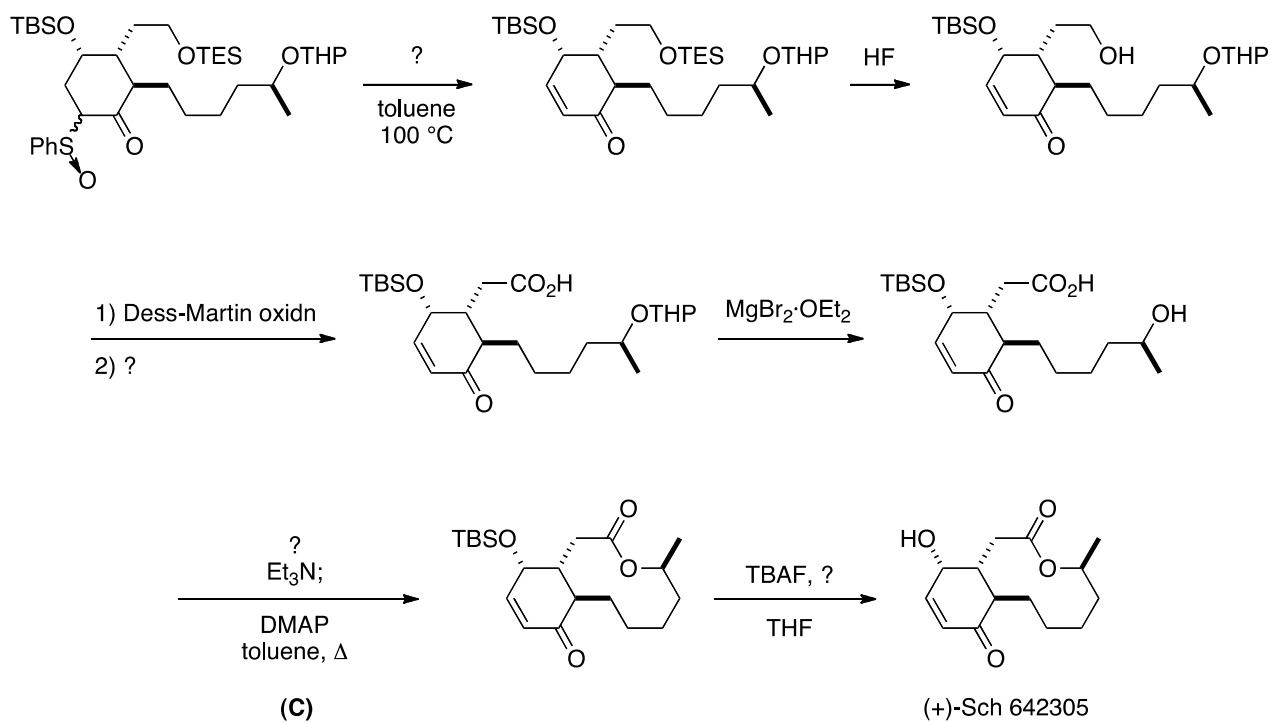
Key Reactions

(A) stereoselective reduction by baker's yeast,  
(B) dianion alkylation of  $\beta$ -ketosulfoxide, (C) Yamaguchi's lactonization



###





**Reference:**

- 1) K. Ishigami, R. Katsuta, H. Watanabe, *Tetrahedron*, **62**, 2224 (2006)