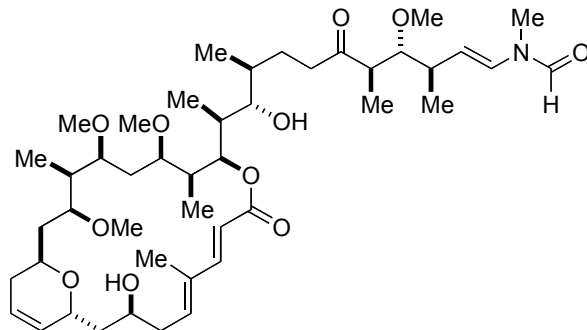


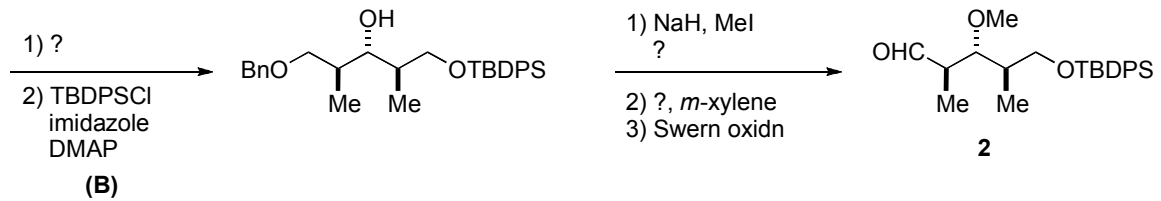
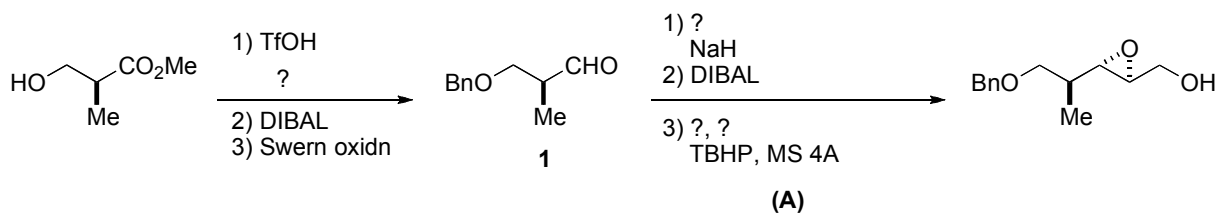
(-)-Scytophycin C (TKGP-110312)

M. Miyashita, K. Tanino<sup>1, 2)</sup>

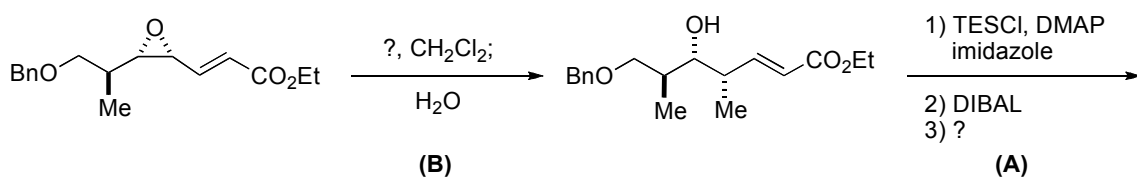
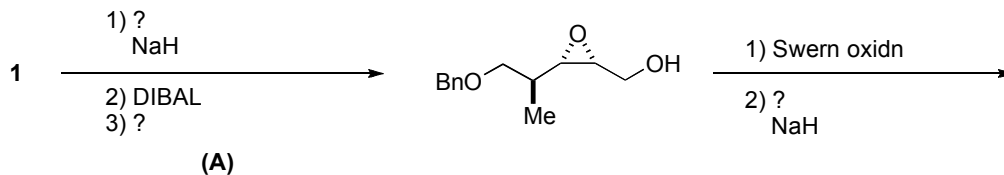


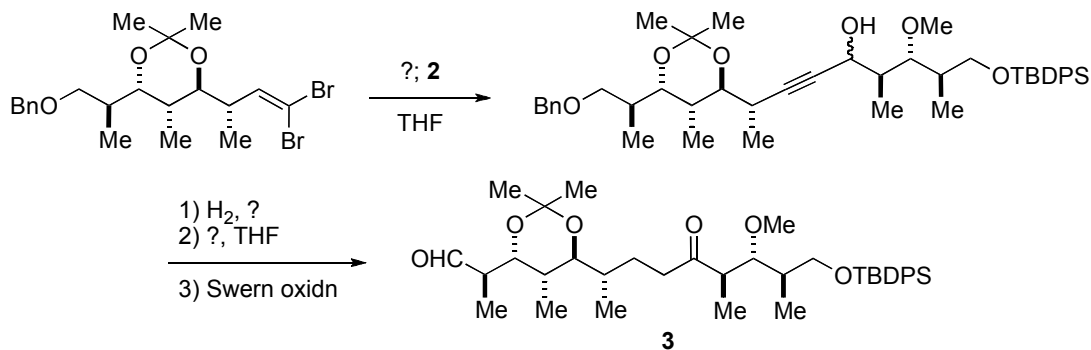
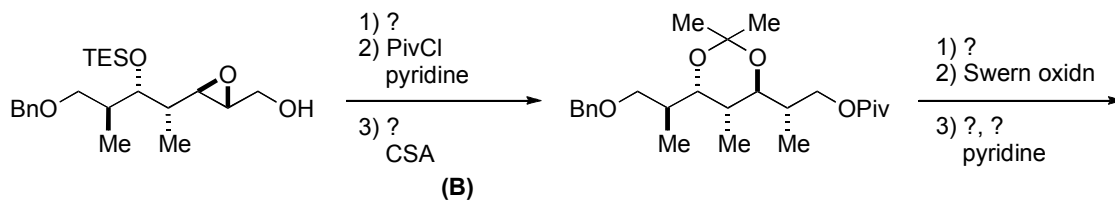
**Activity** Antitumor (抗腫瘍活性)

**Key Reactions** (A) stereoselective epoxidation, (B)  $S_N2$ -type methylation of epoxide, (C) methylation of epoxide with double inversion, (D) *N*-methyl formamide formation by coupling

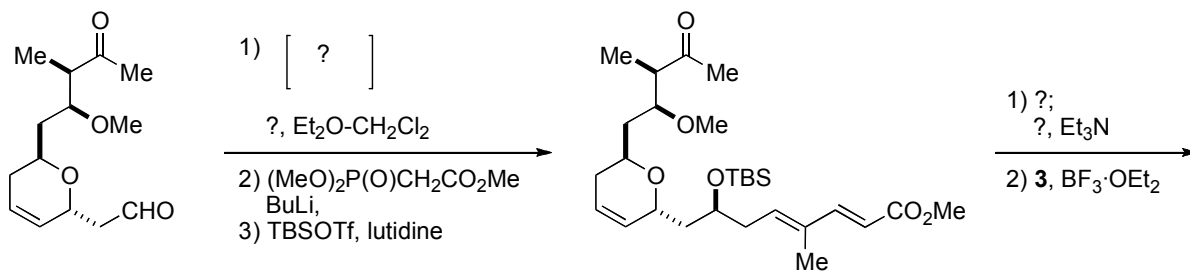
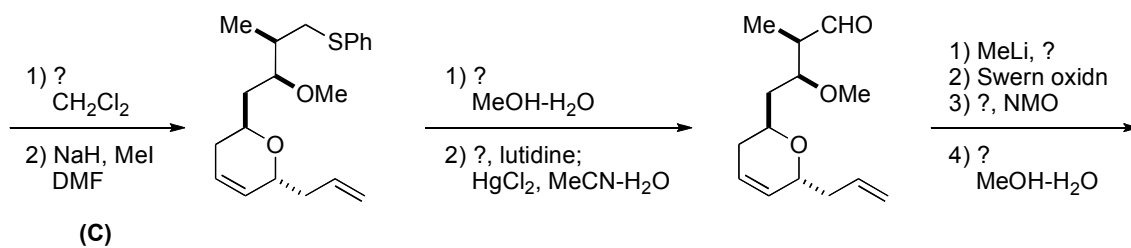
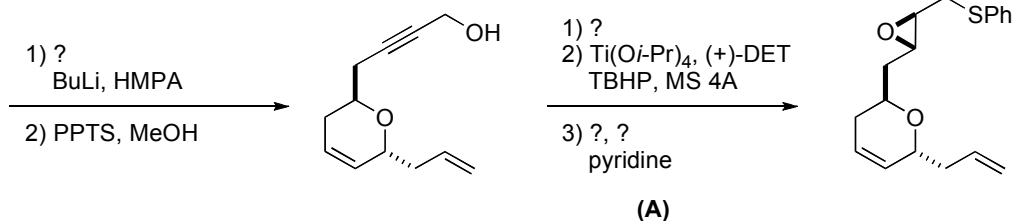
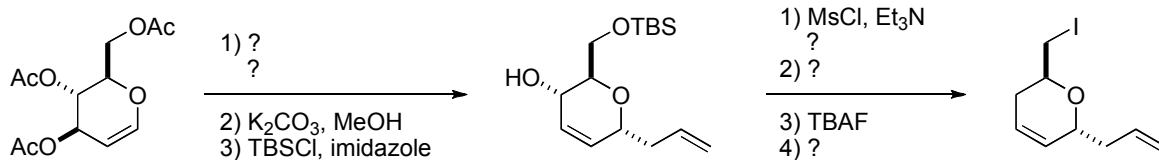


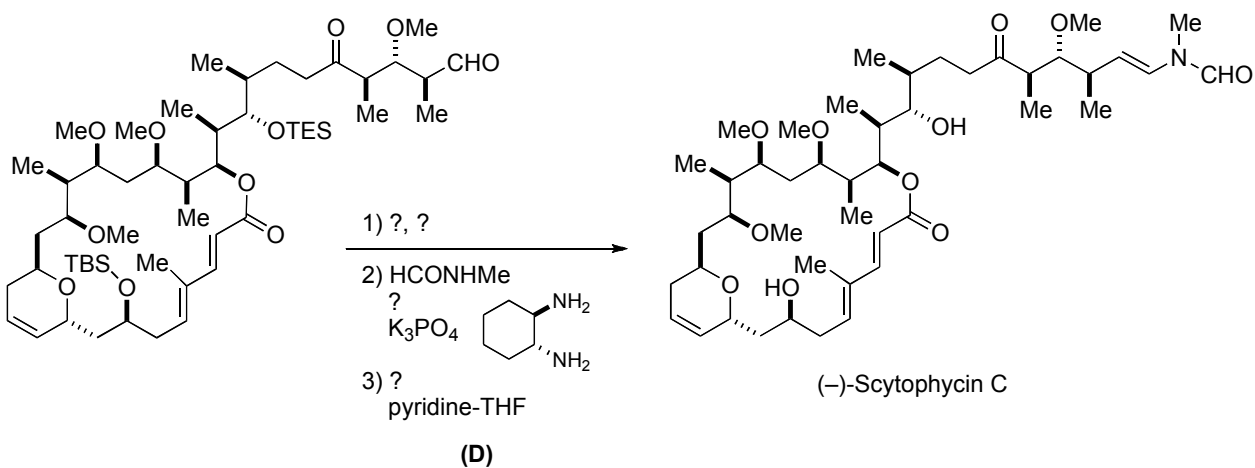
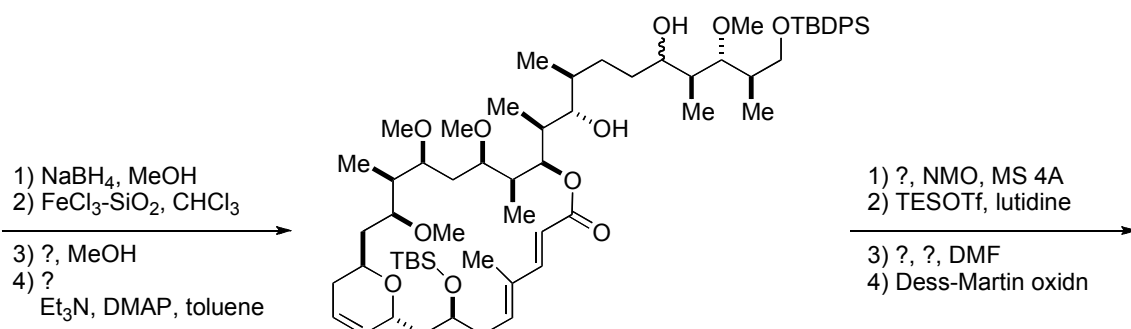
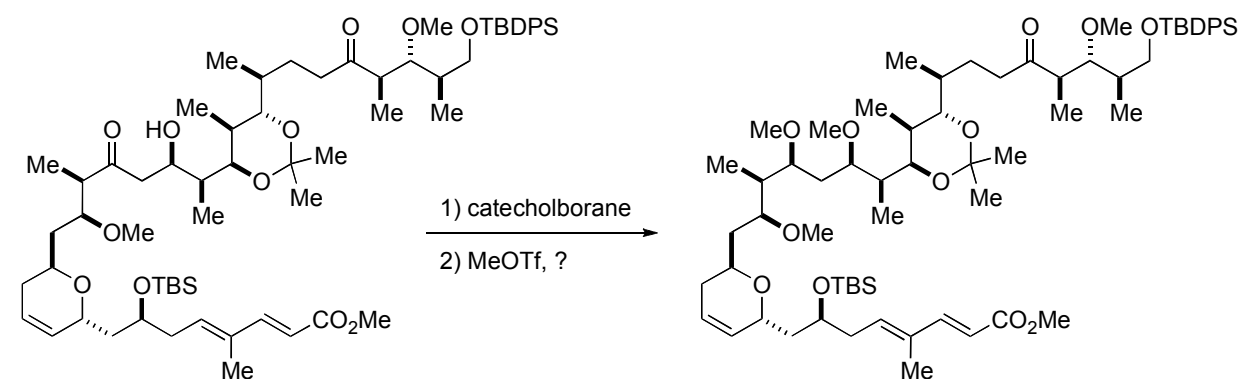
###





###





#### References:

- 1) R. Nakamura, K. Tanino, M. Miyashita, *Org. Lett.*, **5**, 3579 (2003)
- 2) R. Nakamura, K. Tanino, M. Miyashita, *Org. Lett.*, **5**, 3583 (2003)